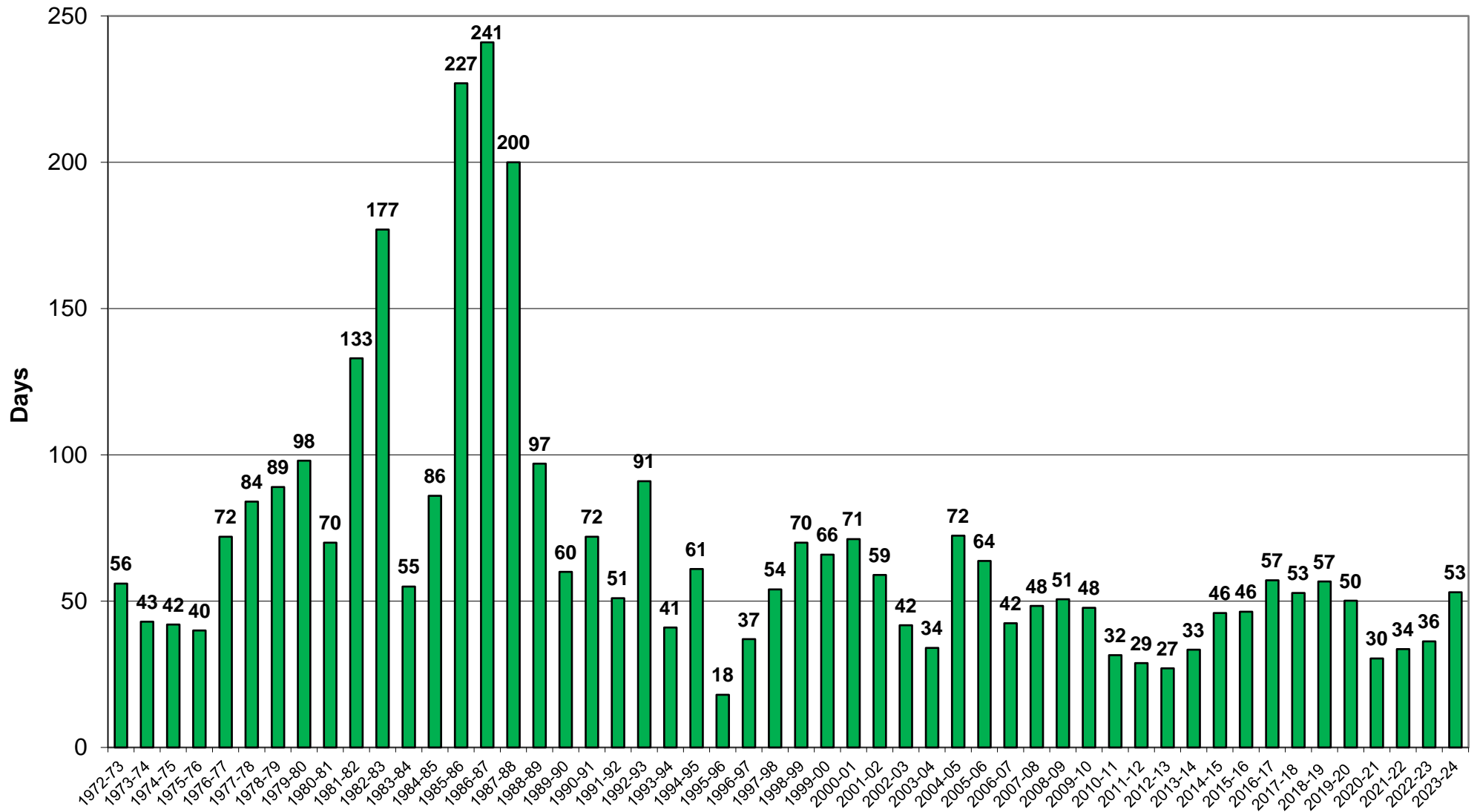
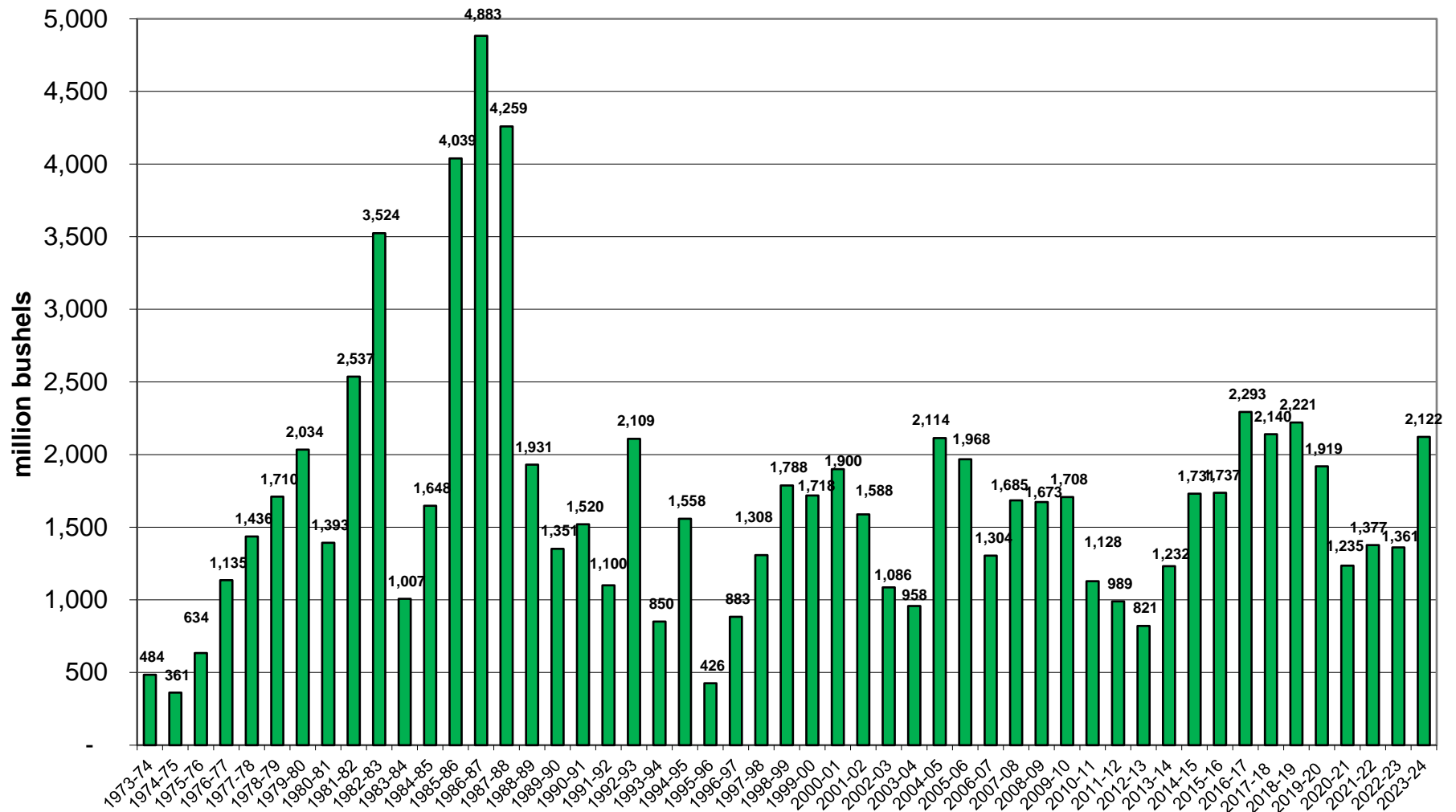


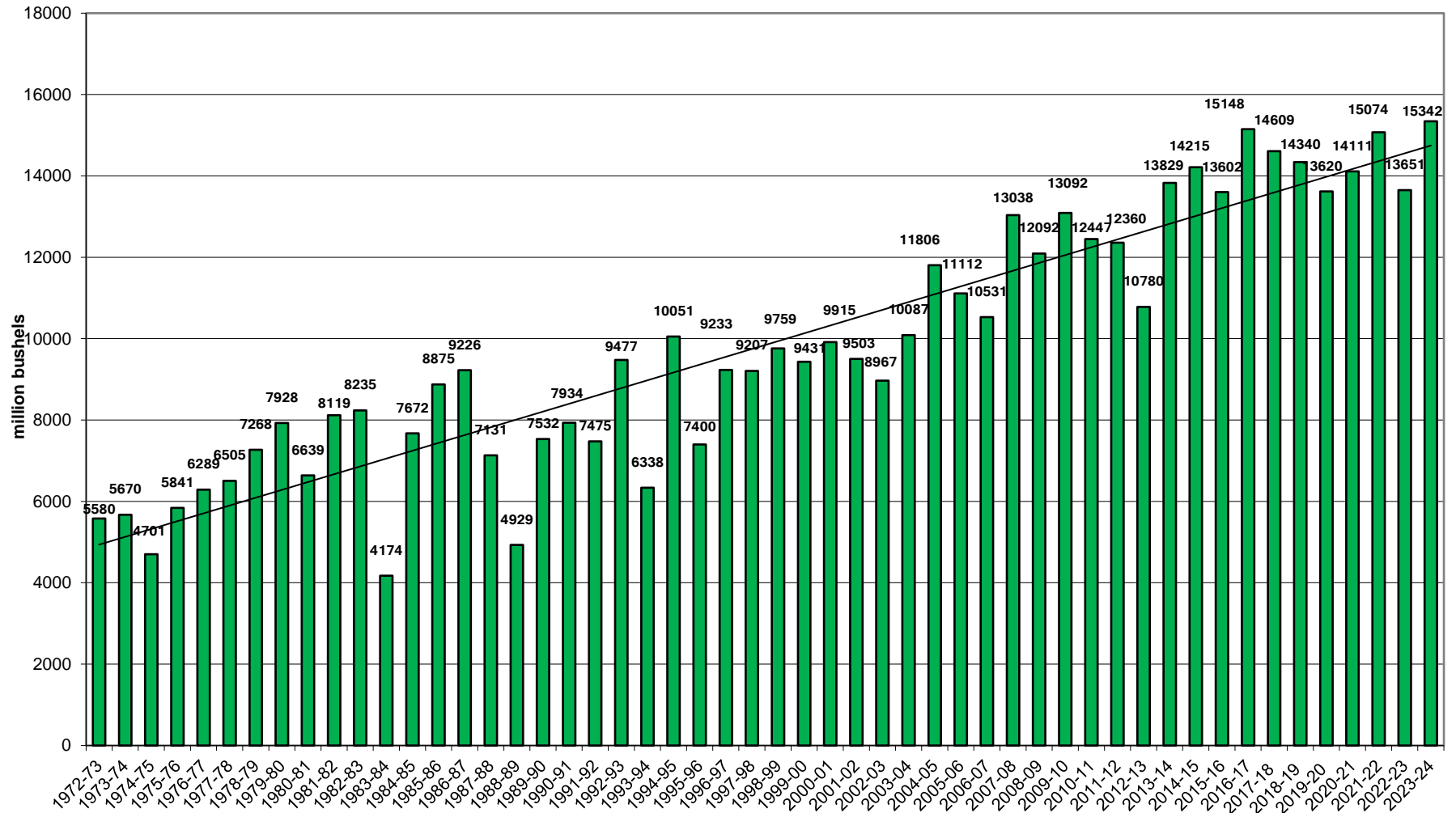
U.S. Corn Carryout in Days Supply



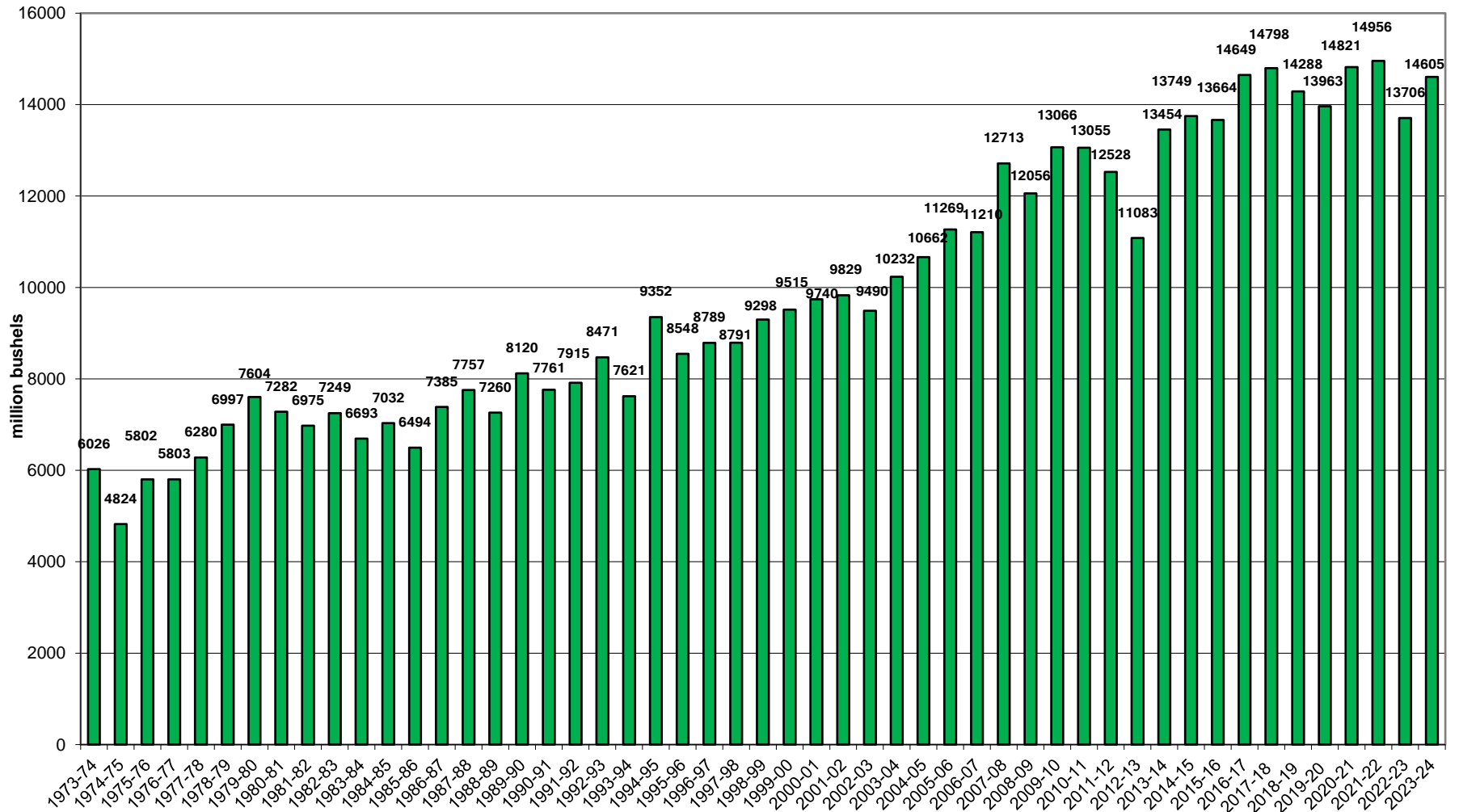
U.S. Corn Carryout



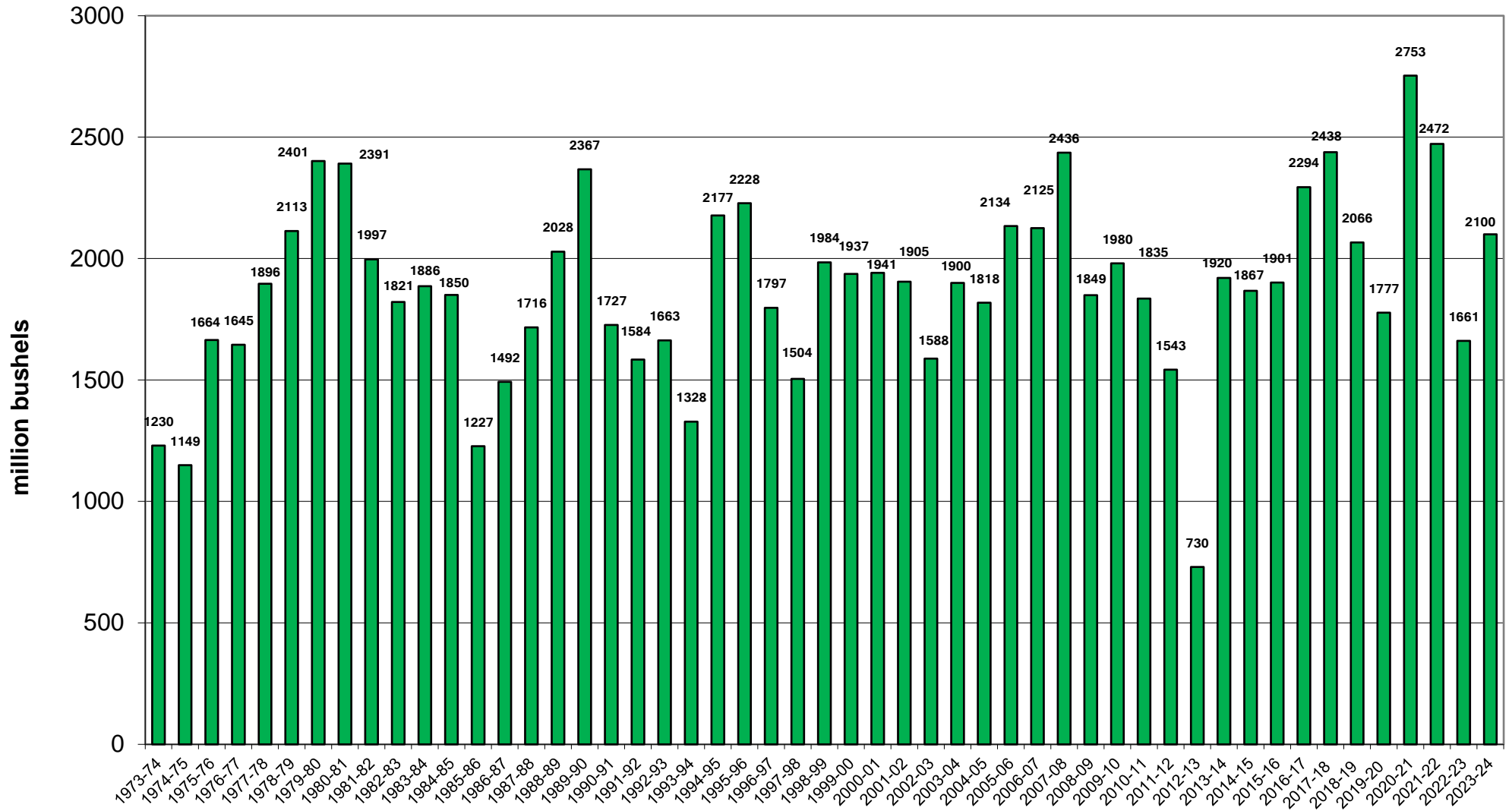
U.S. Corn Production



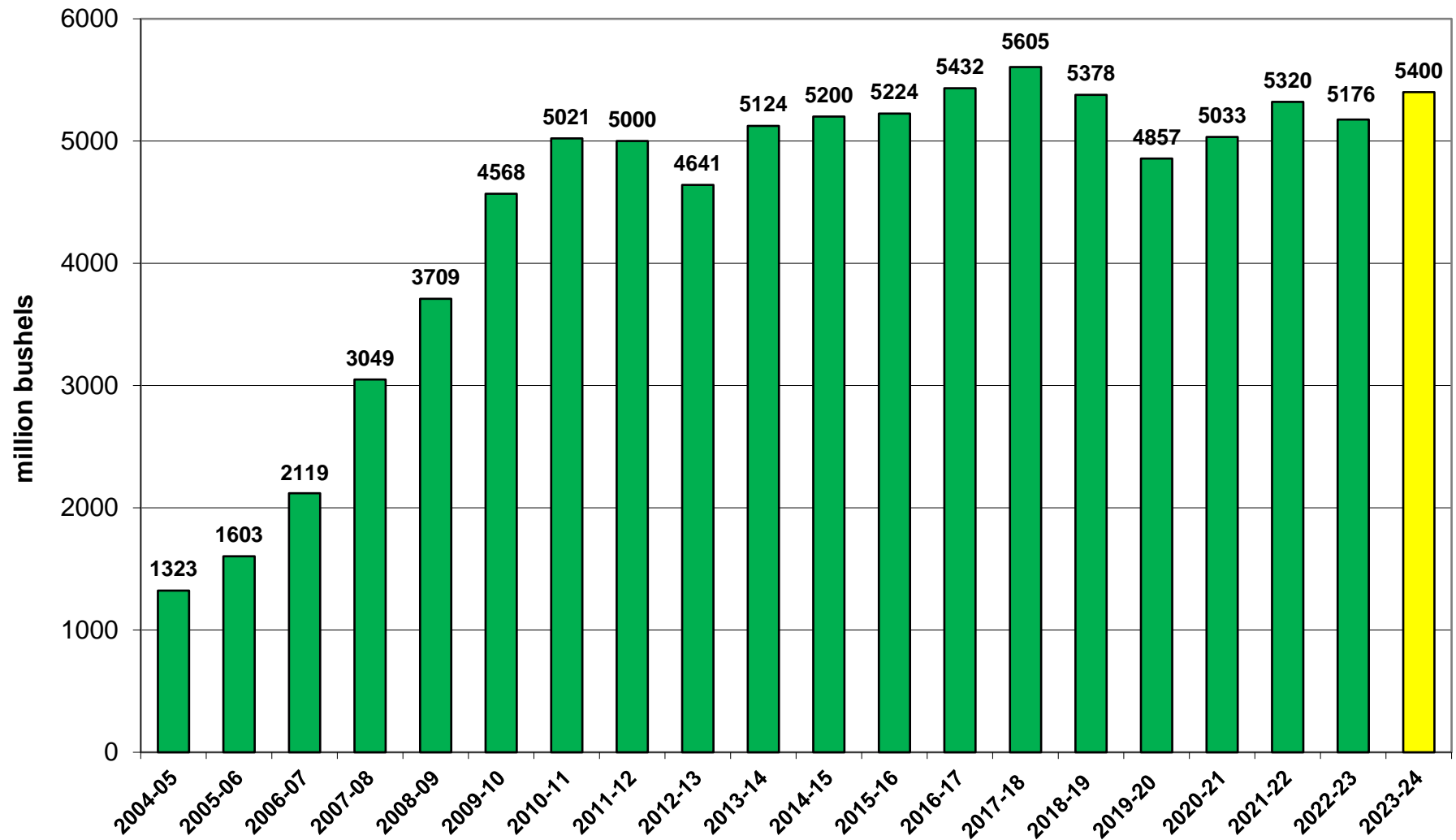
U.S. Corn Usage



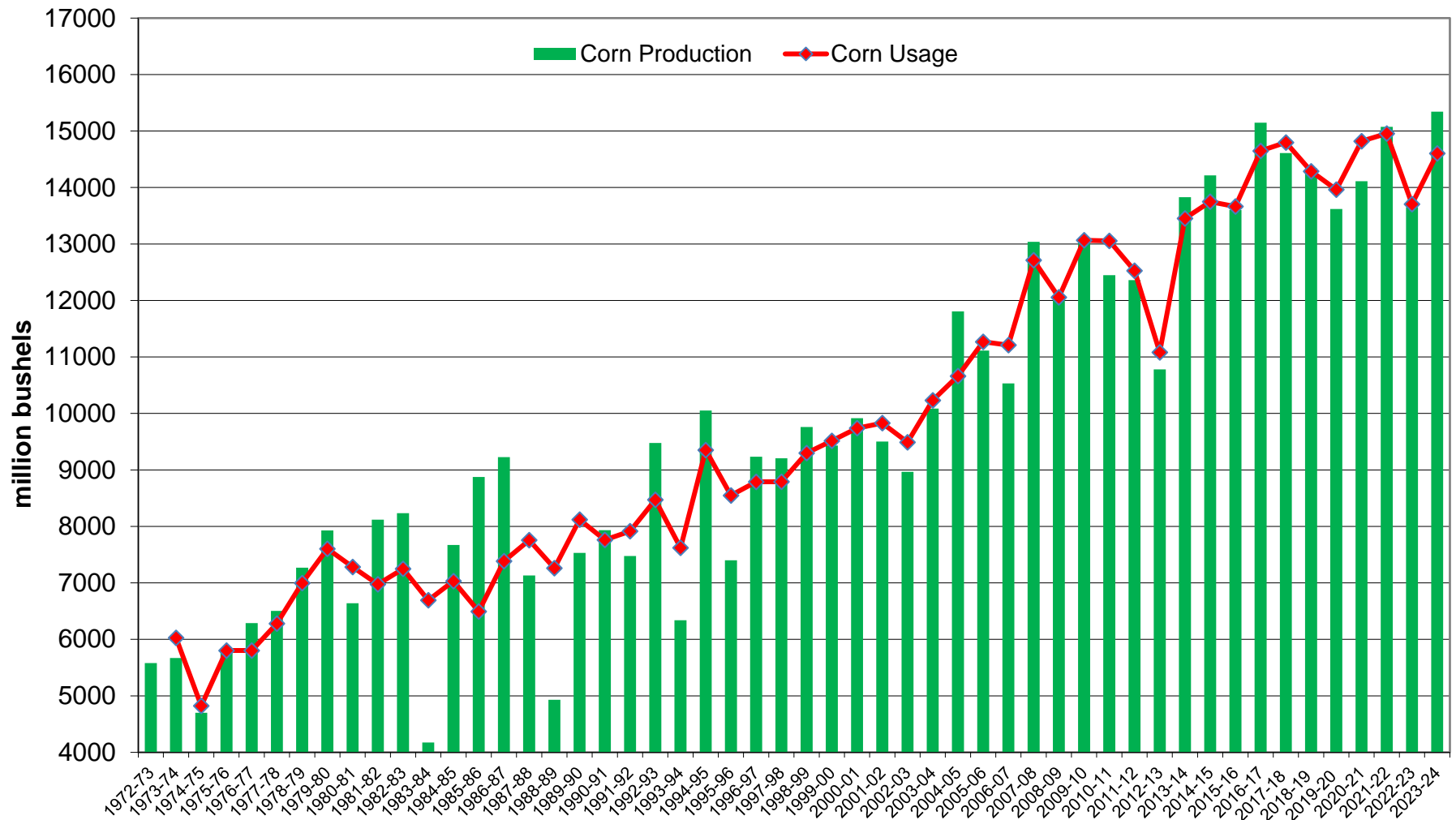
U.S. Corn Exports Since 1973



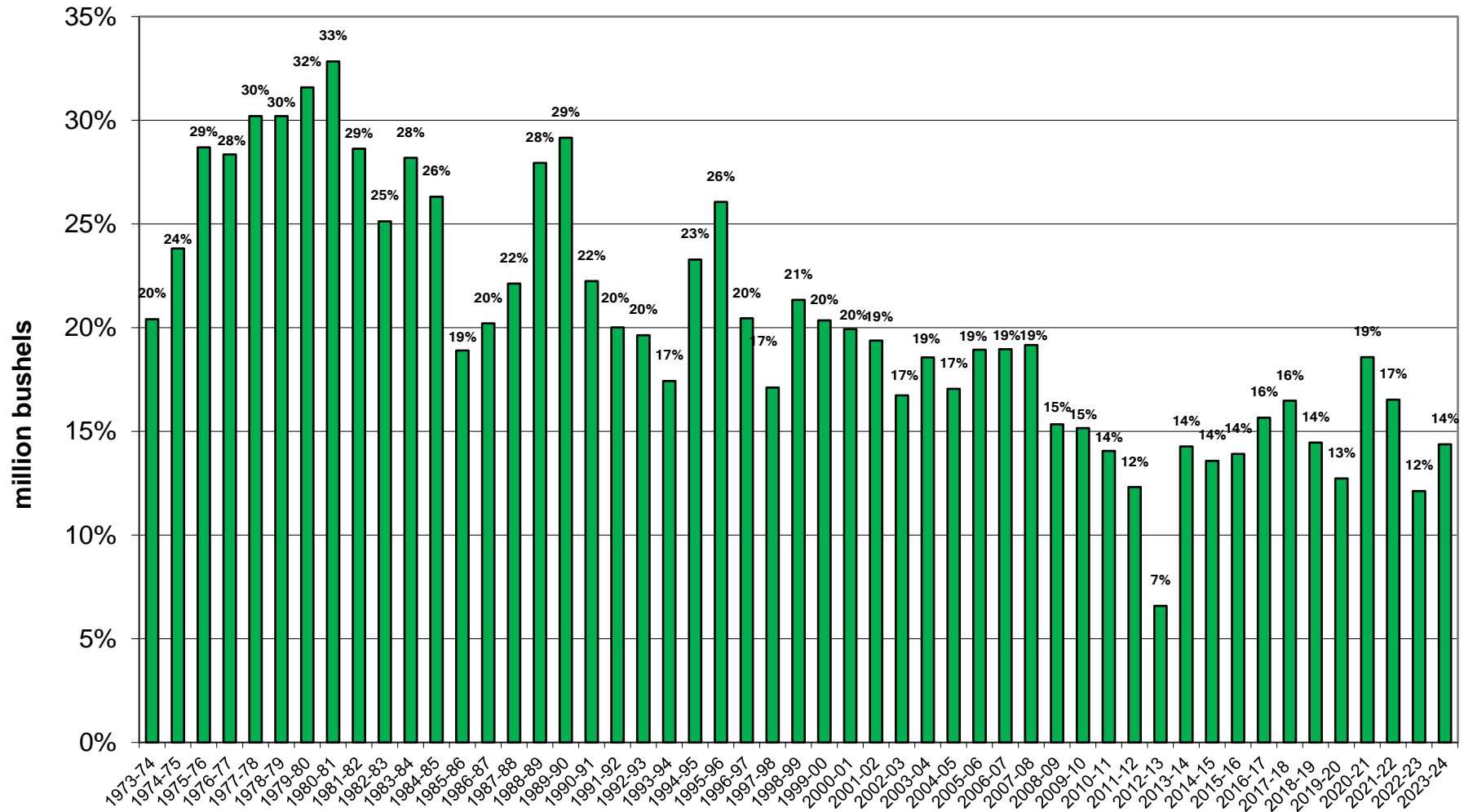
U.S. Corn for Ethanol Use



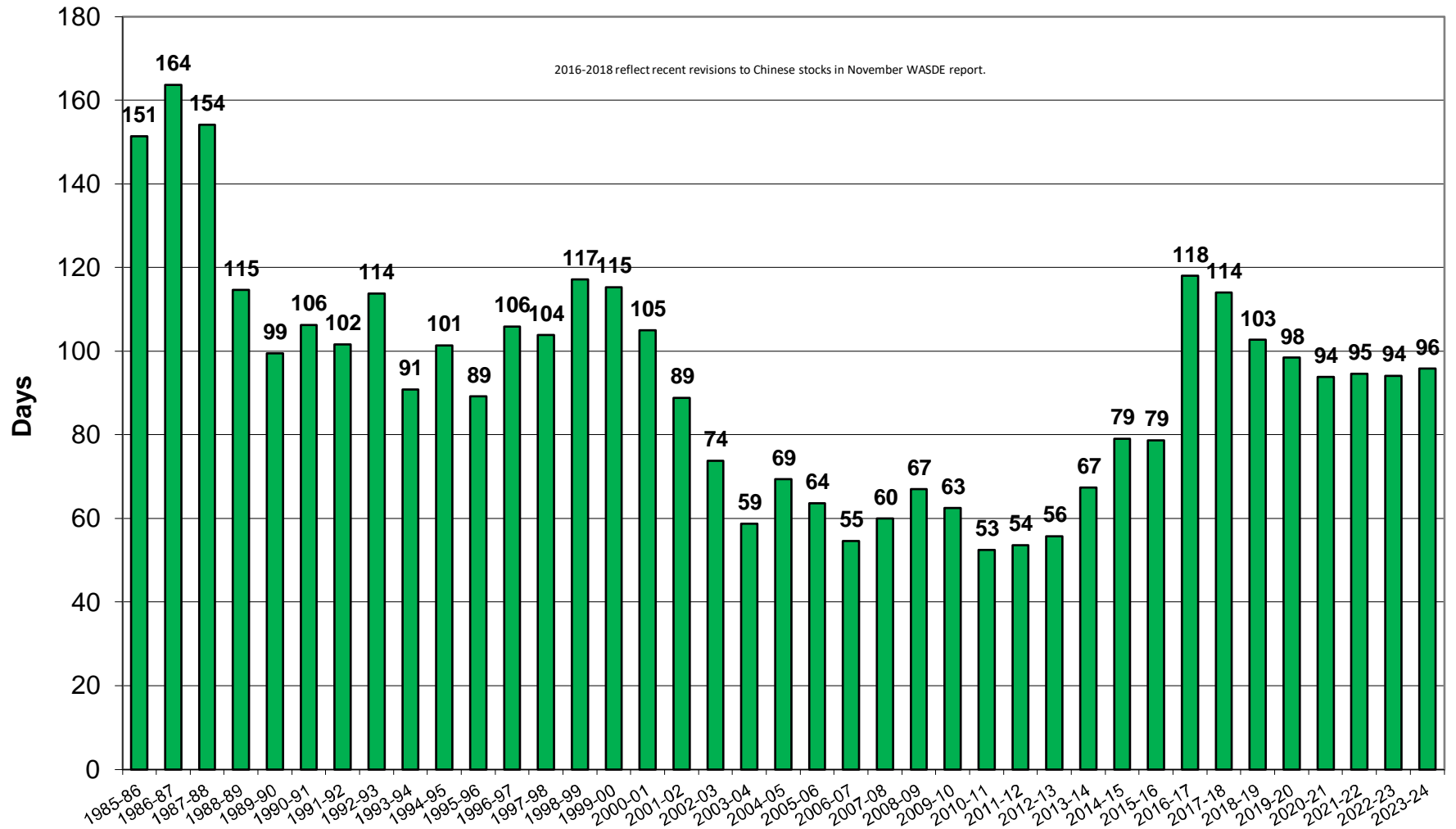
U.S. Corn Usage & Production



U.S. Corn Exports as % of Total Use



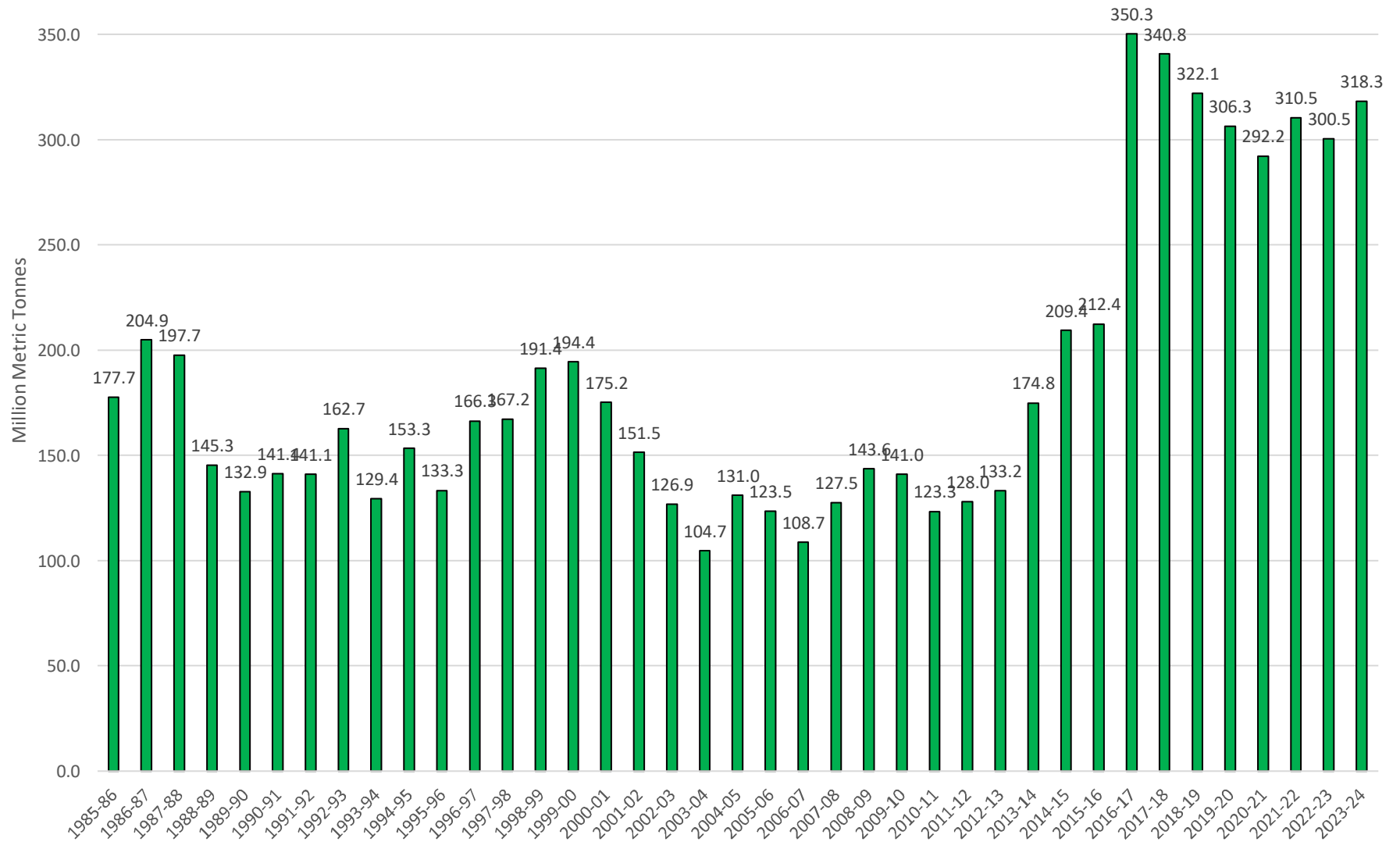
World Corn Carryout in Days Supply



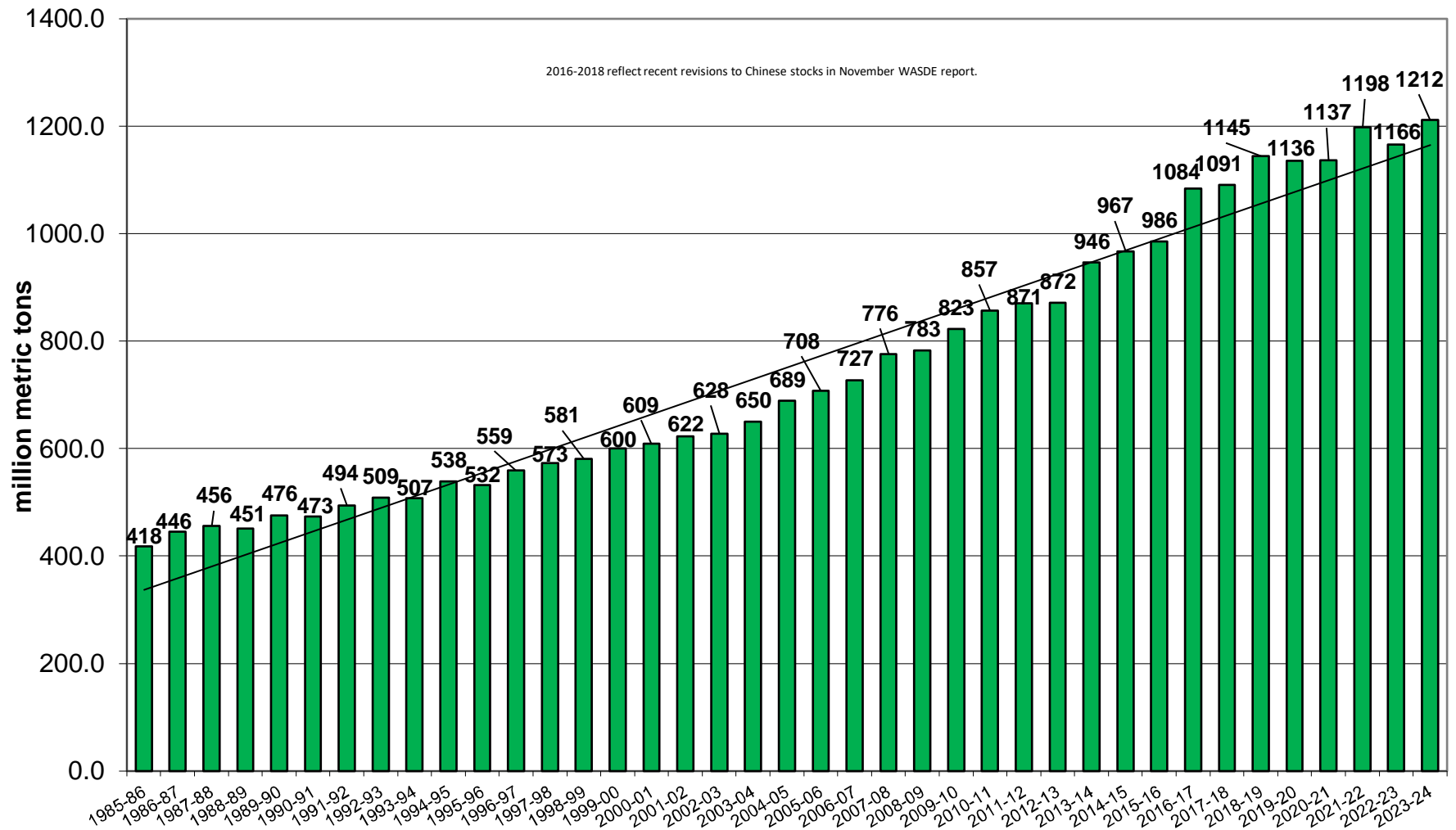
World Corn Total Carryout



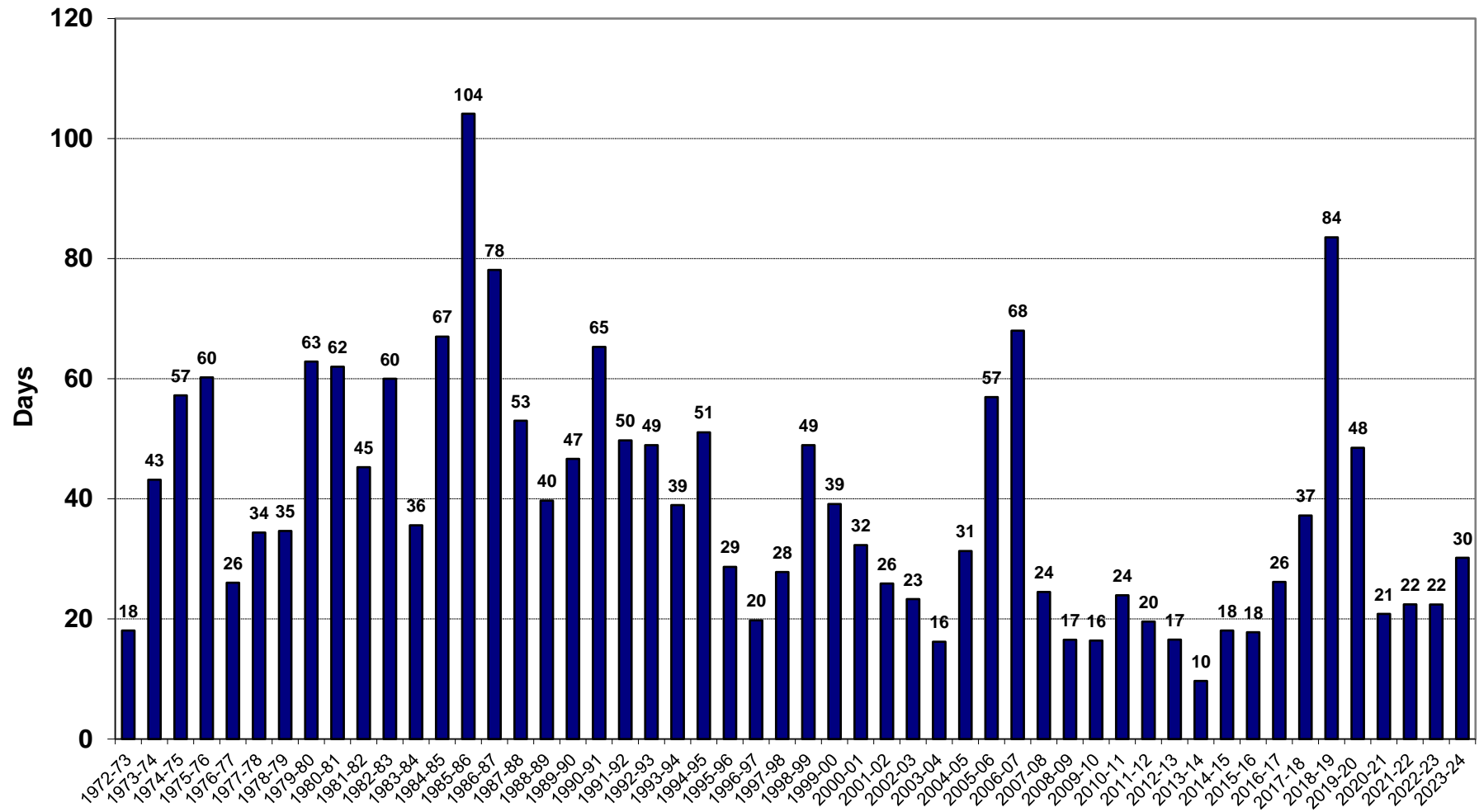
2016-2018 reflect recent revisions to Chinese stocks in November WASDE report.



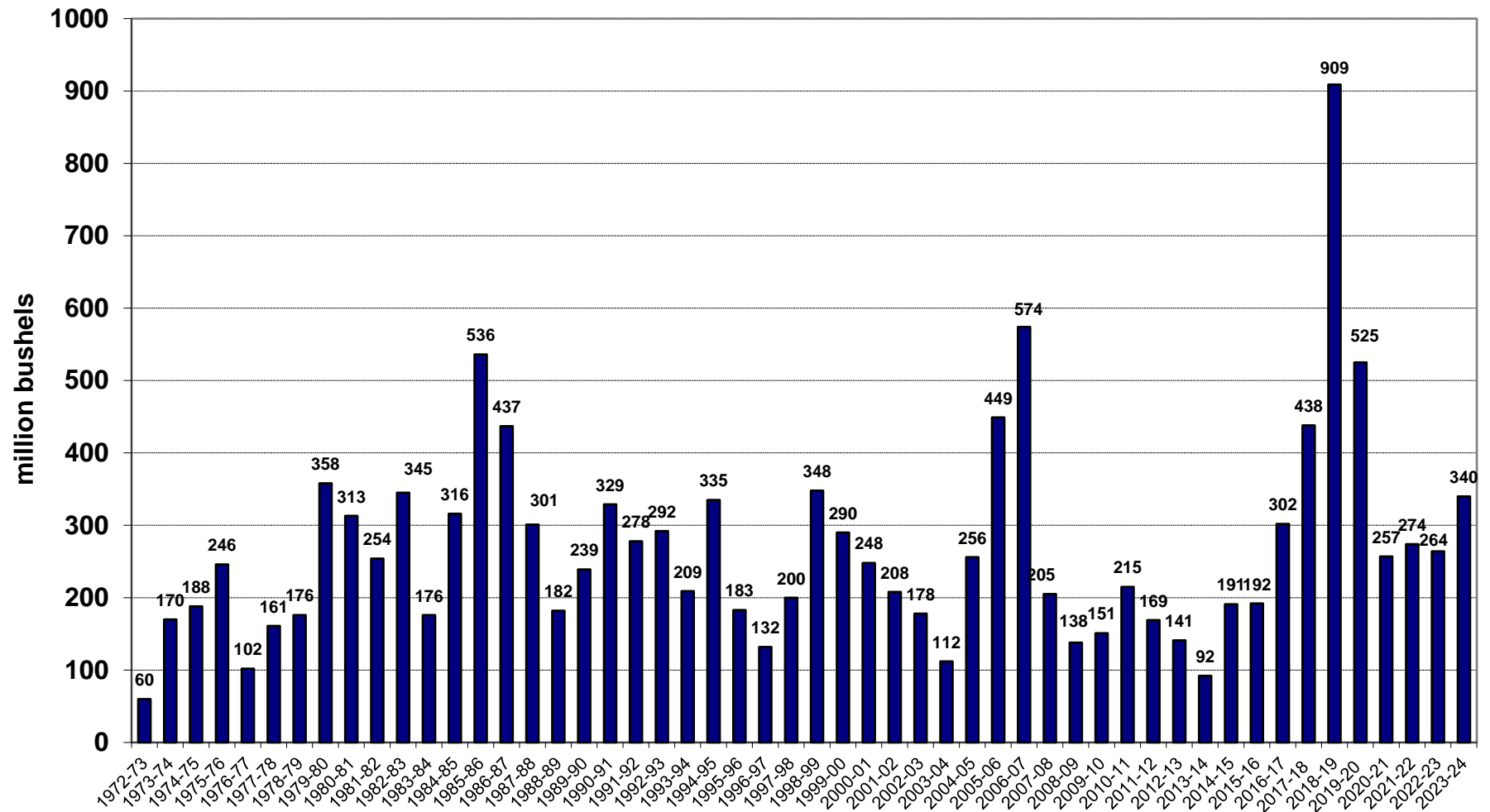
World Corn Usage



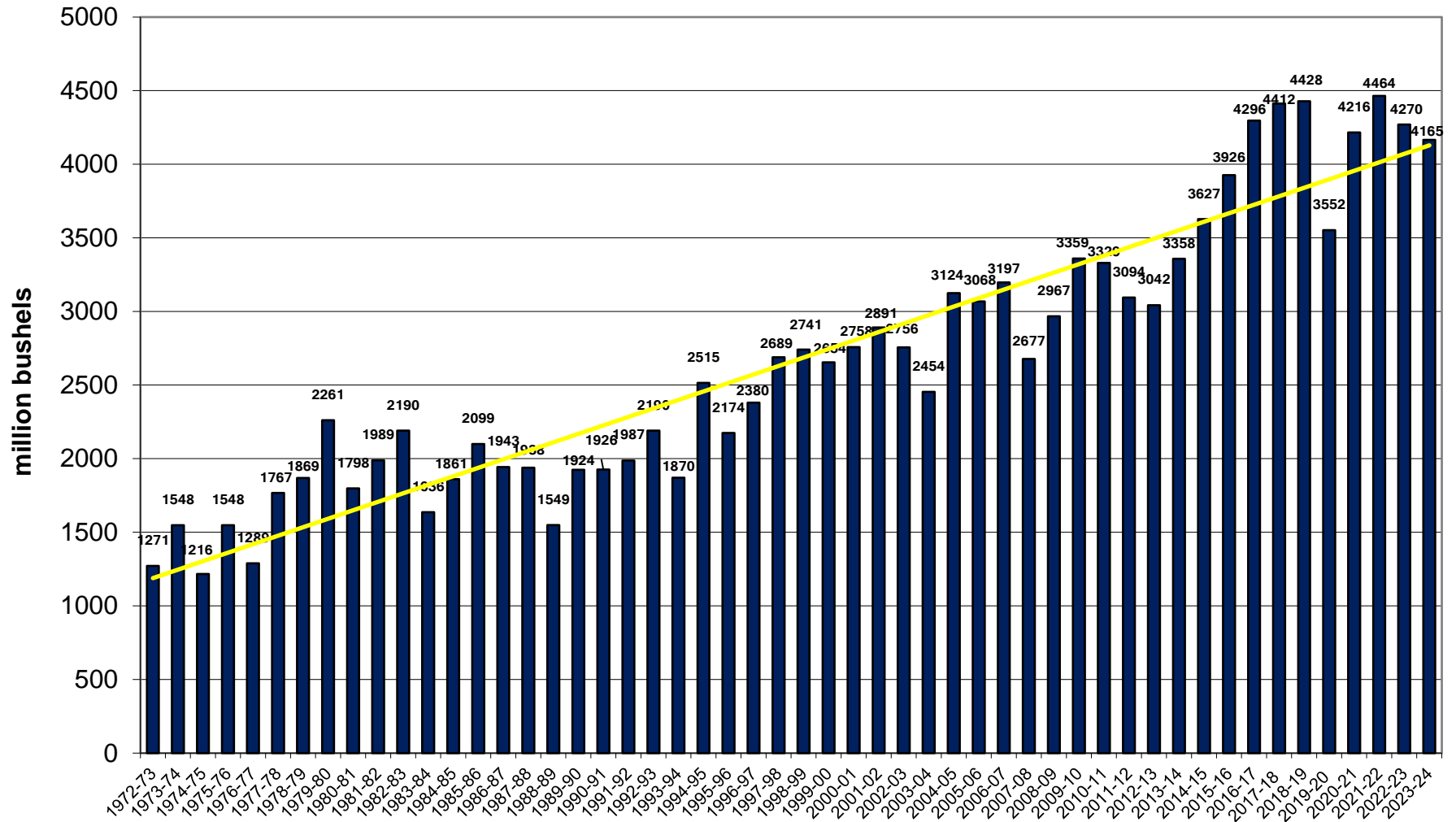
U.S. Soybean Carryout in Days Supply



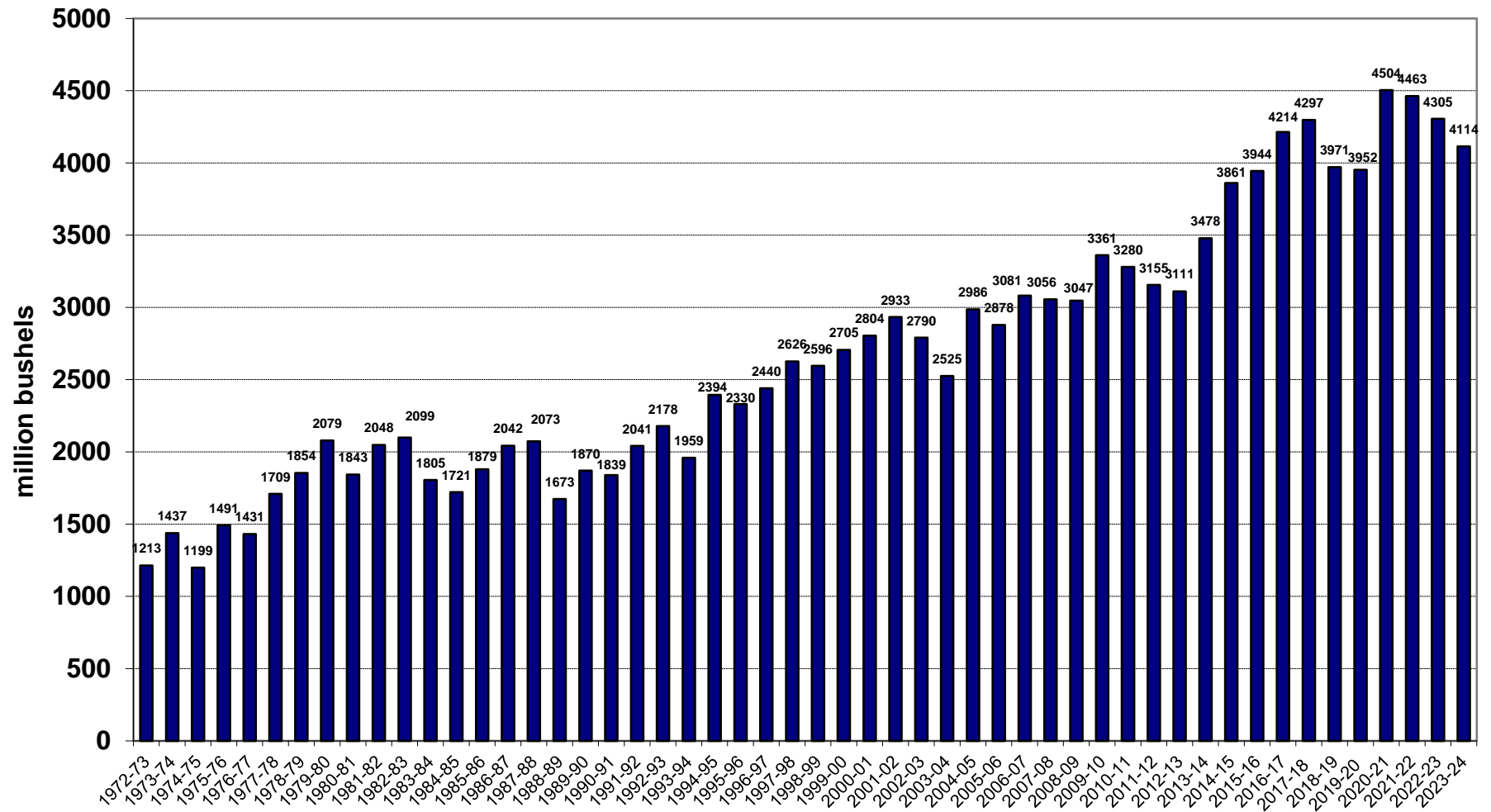
U.S. Soybean Carryout



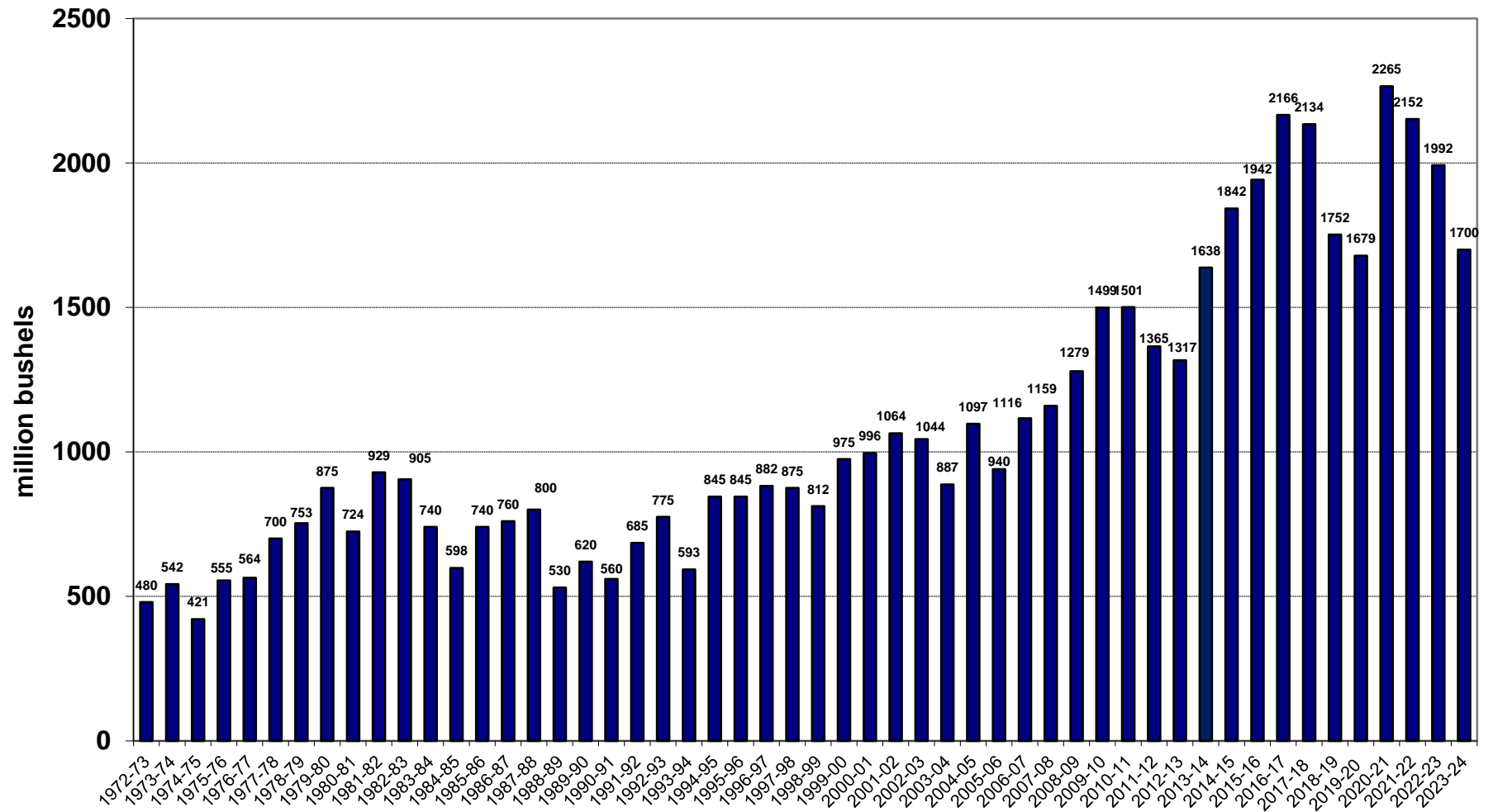
U.S. Soybean Production



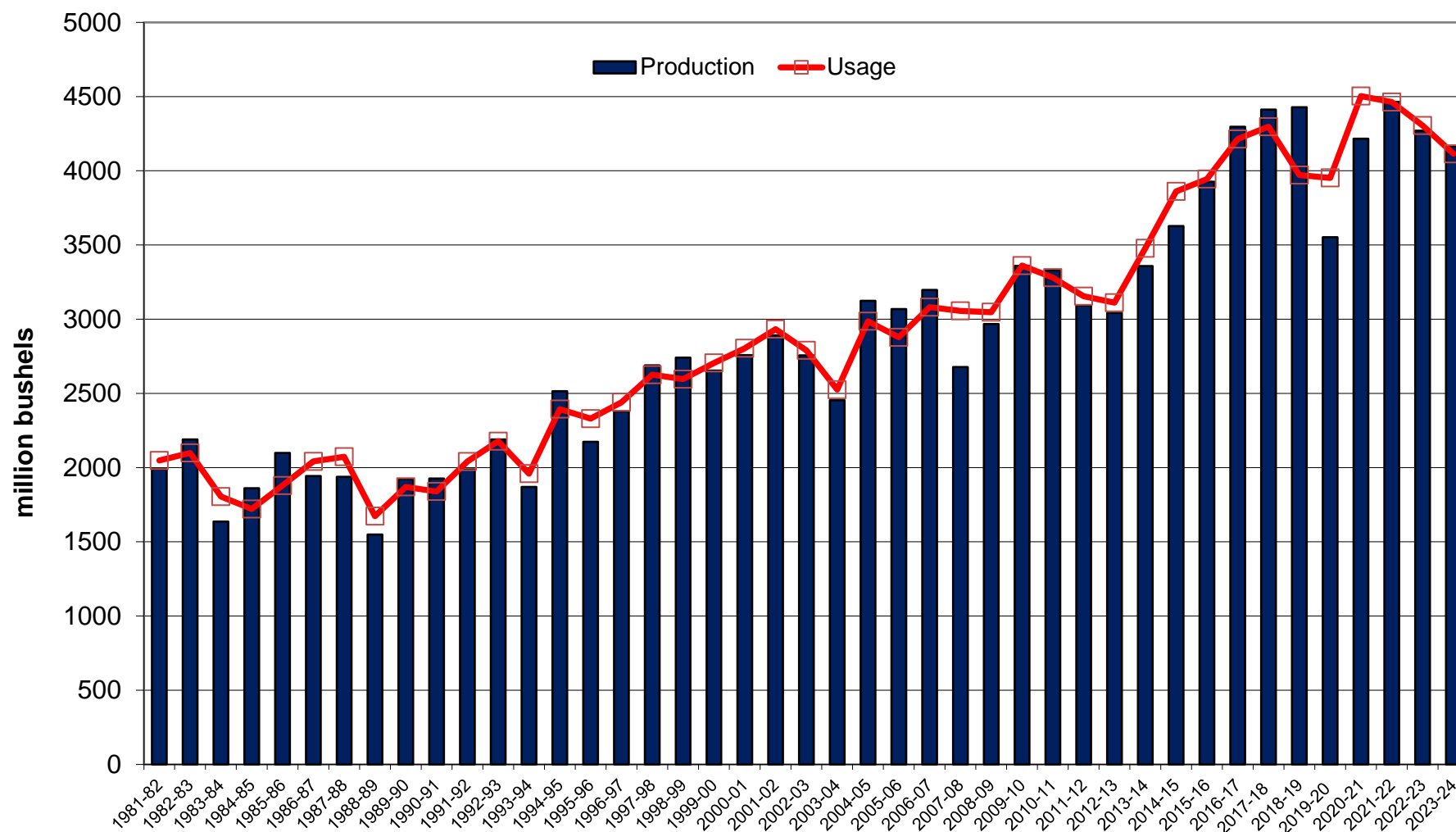
U.S. Soybean Usage



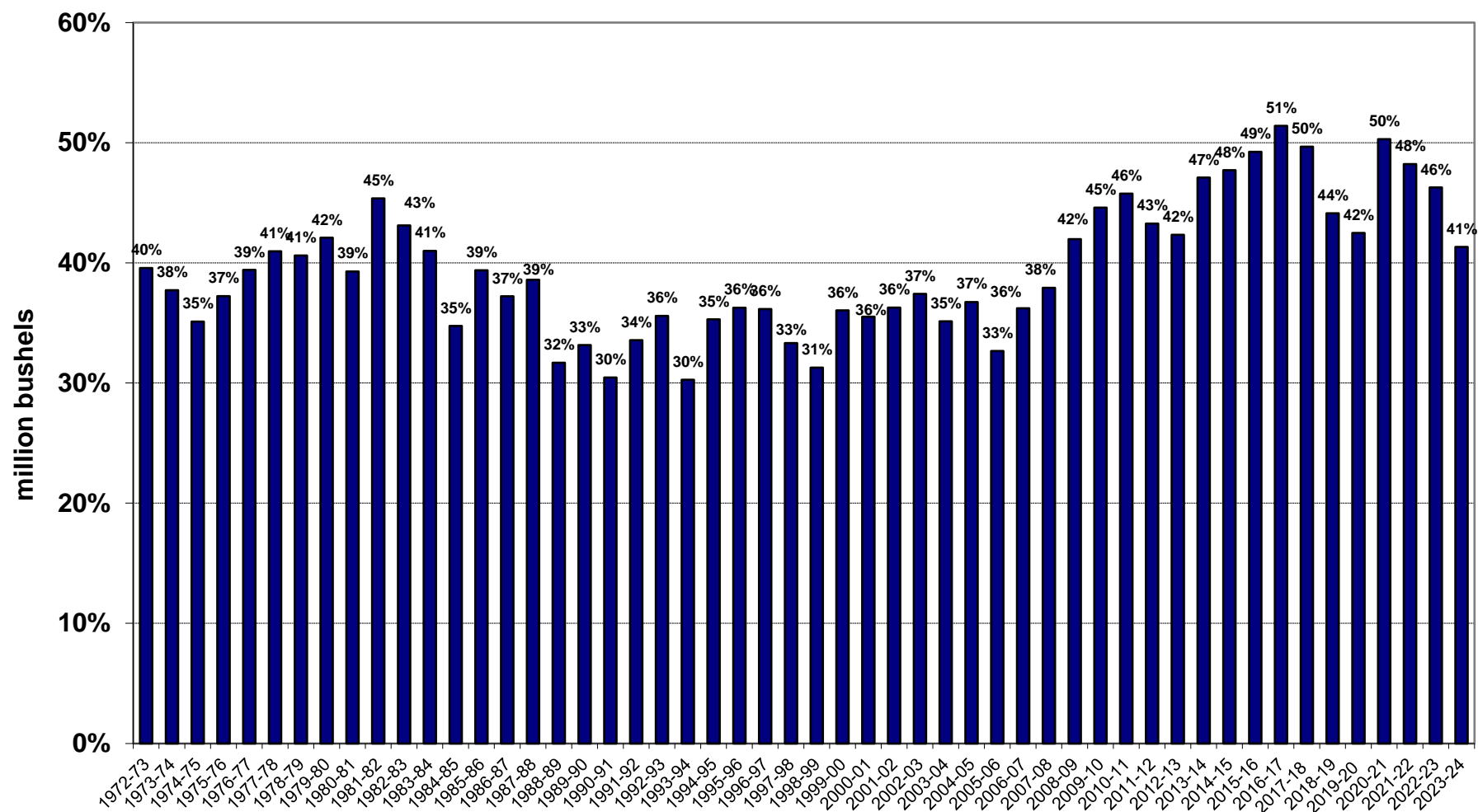
U.S. Soybean Exports



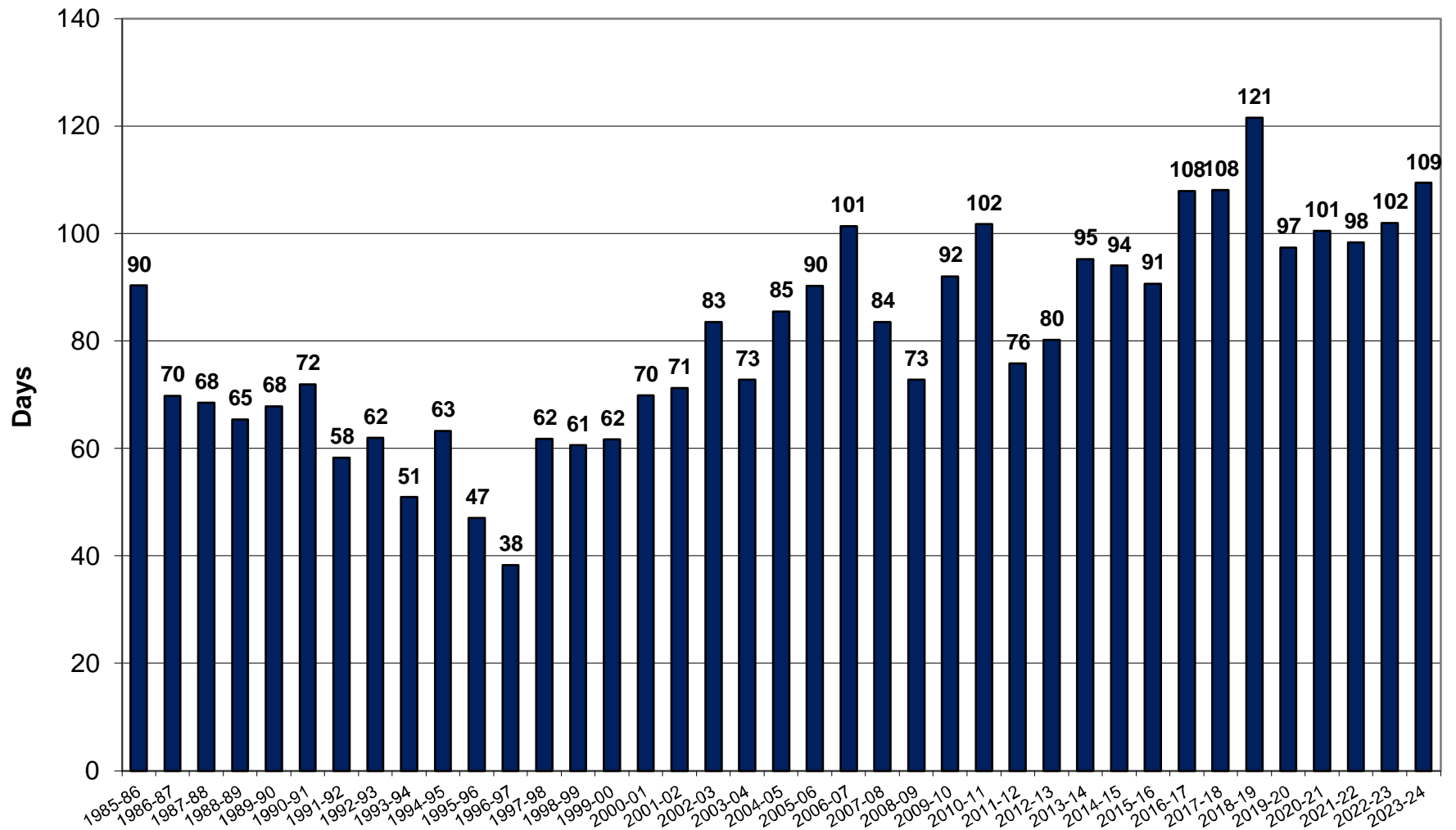
U.S. Soybean Production & Use



U.S. Soybean Usage - Exports as a % of Use

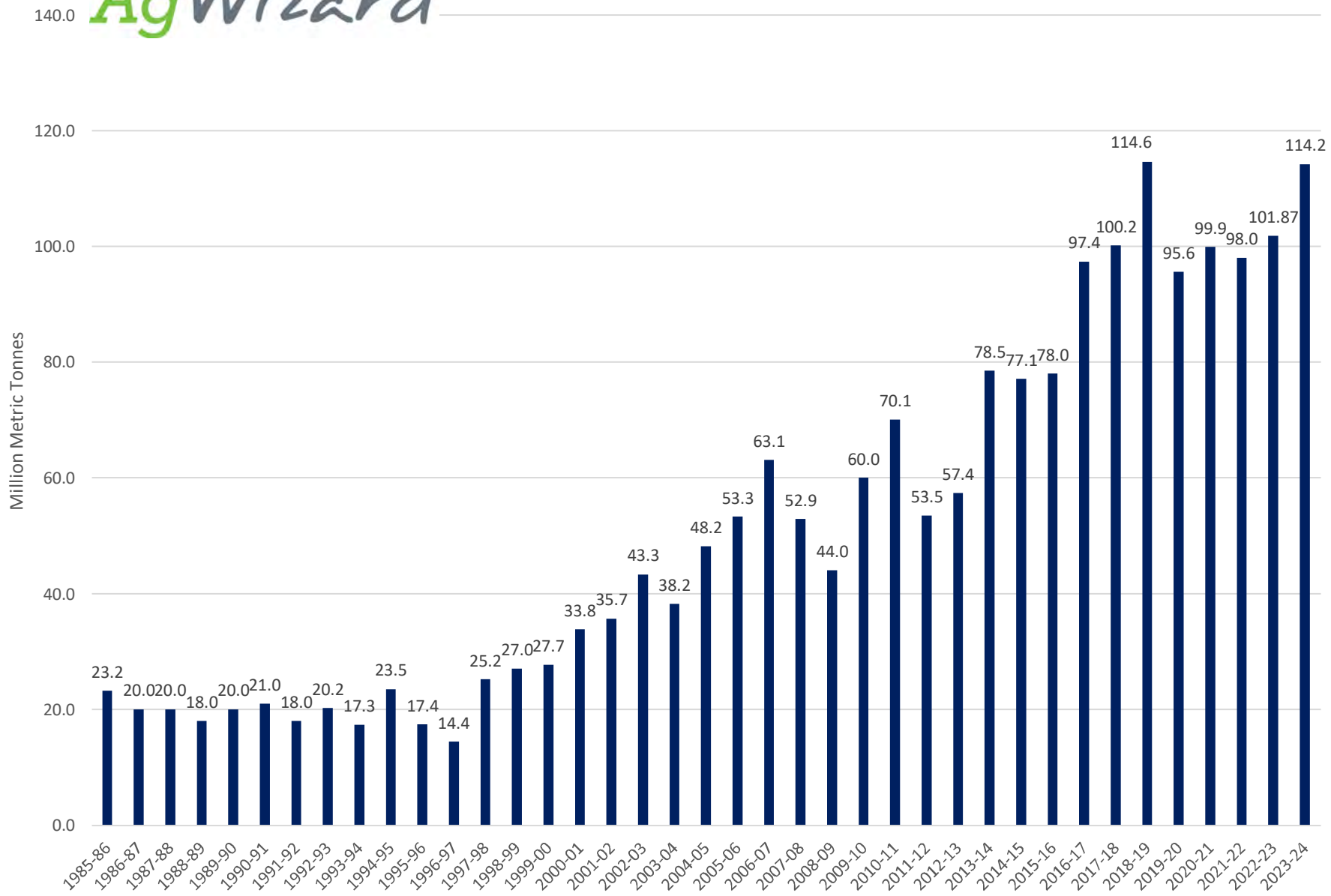


World Soybean Carryout in Days Supply

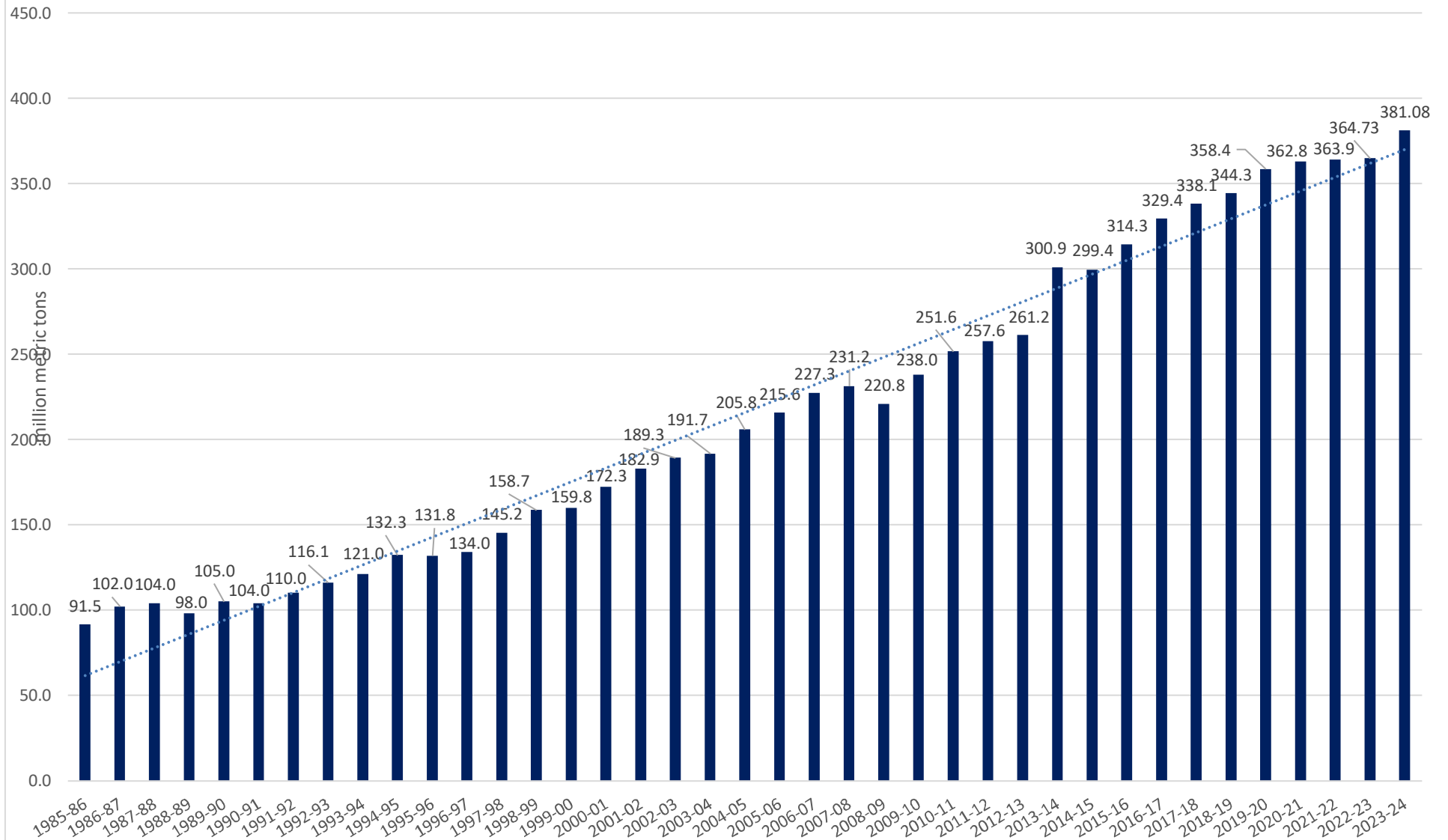




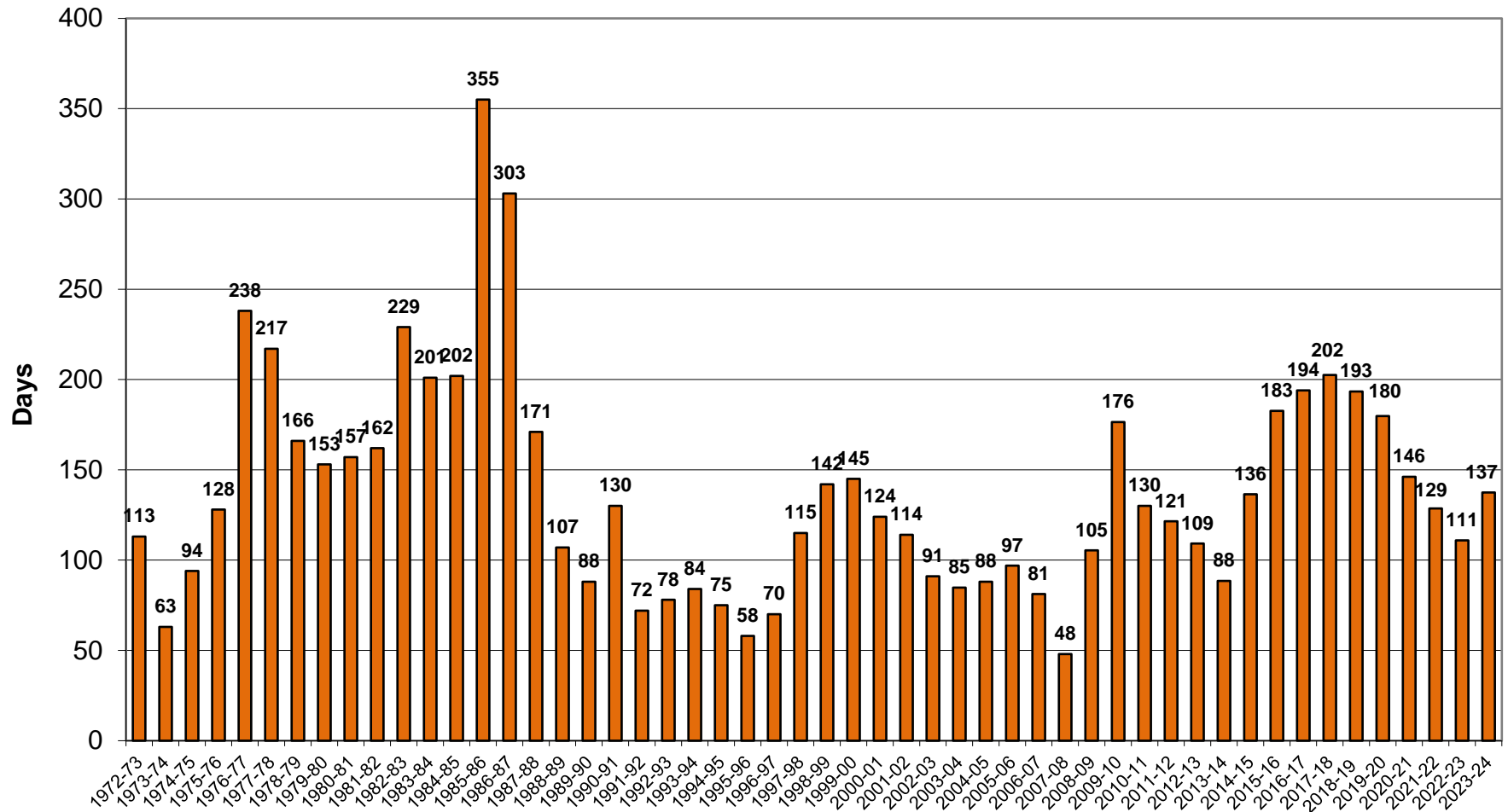
World Soybeans Total Carryout



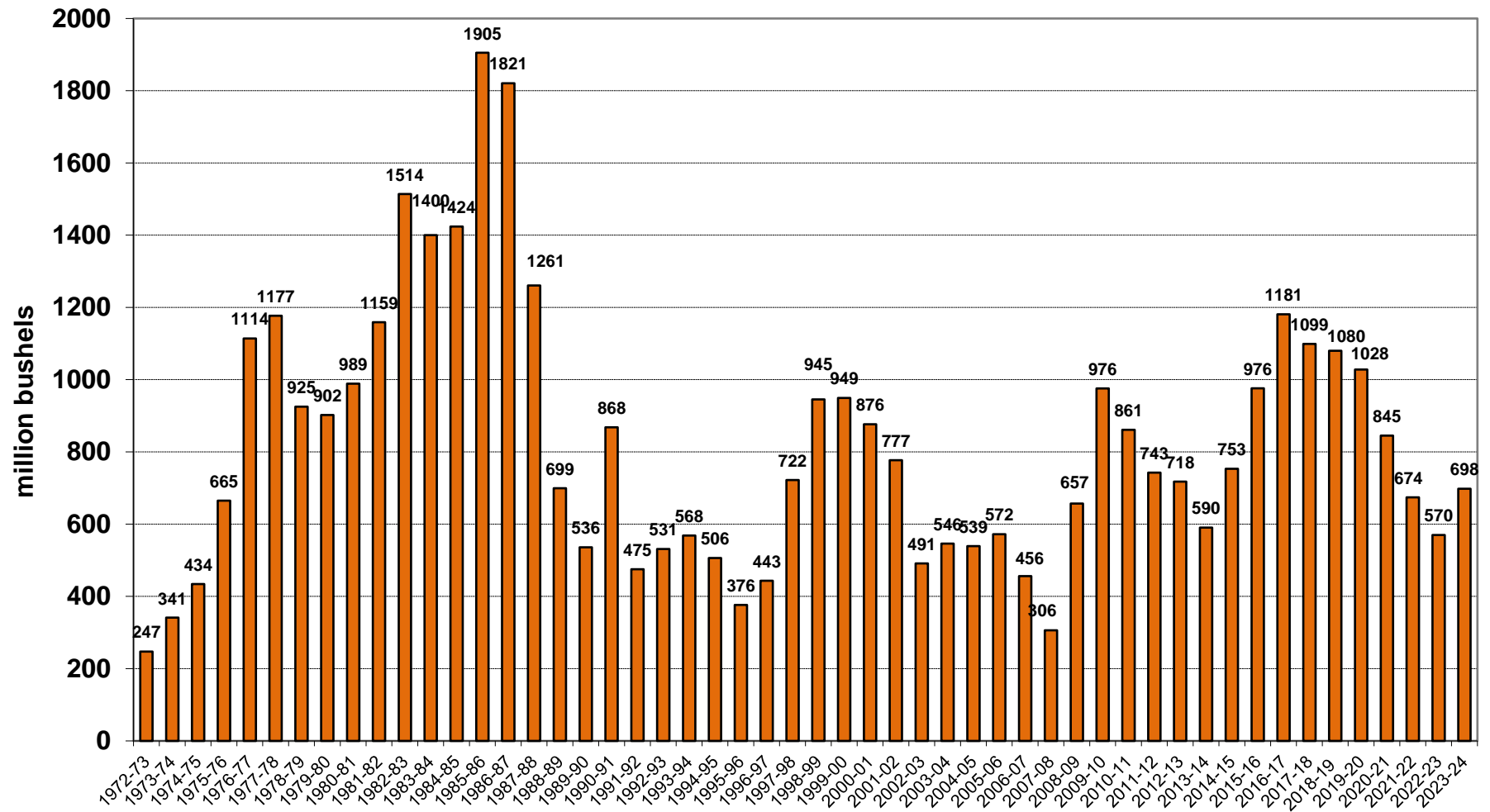
World Soybean Usage



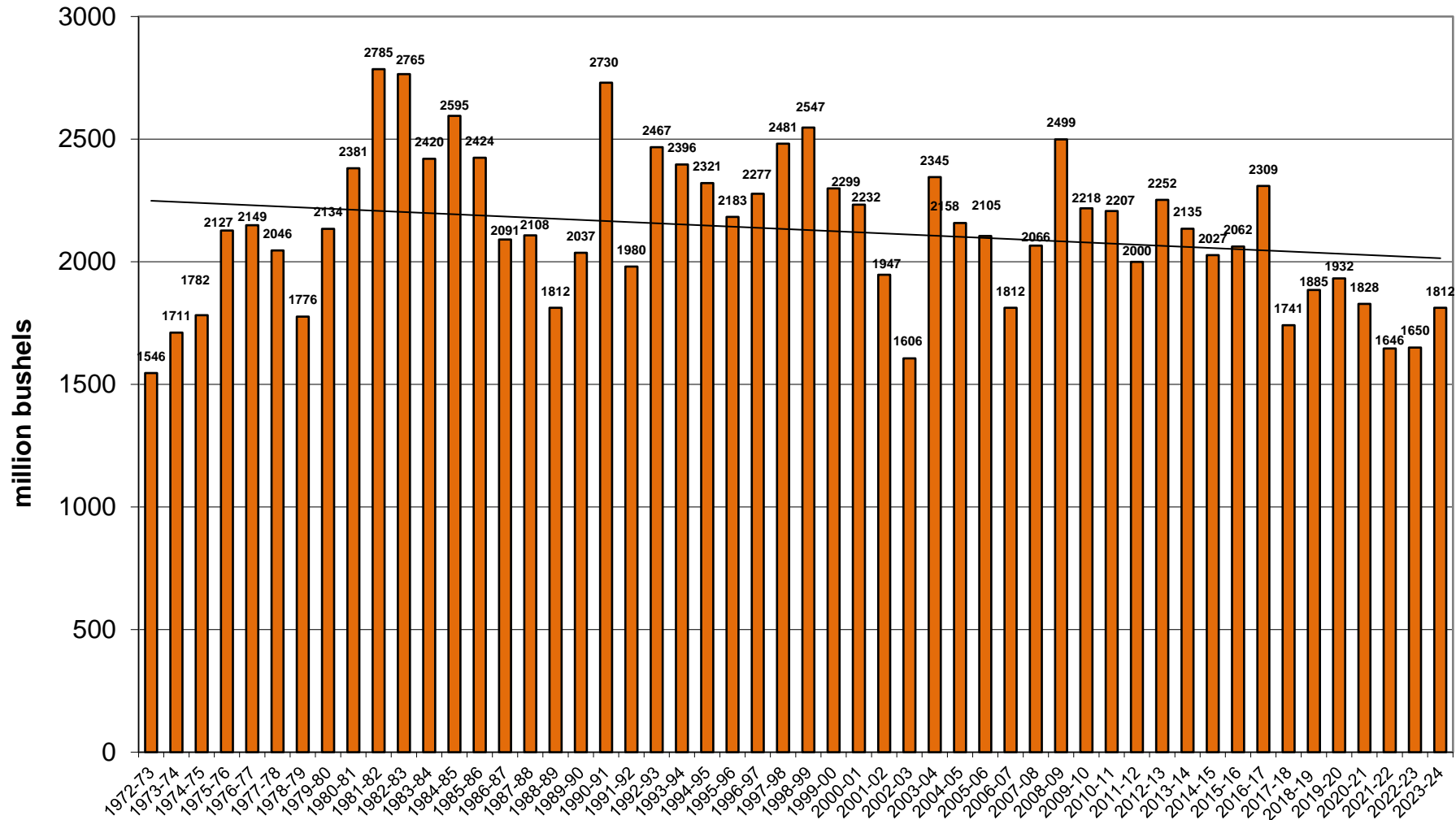
U.S. Wheat Carryout in Days Supply



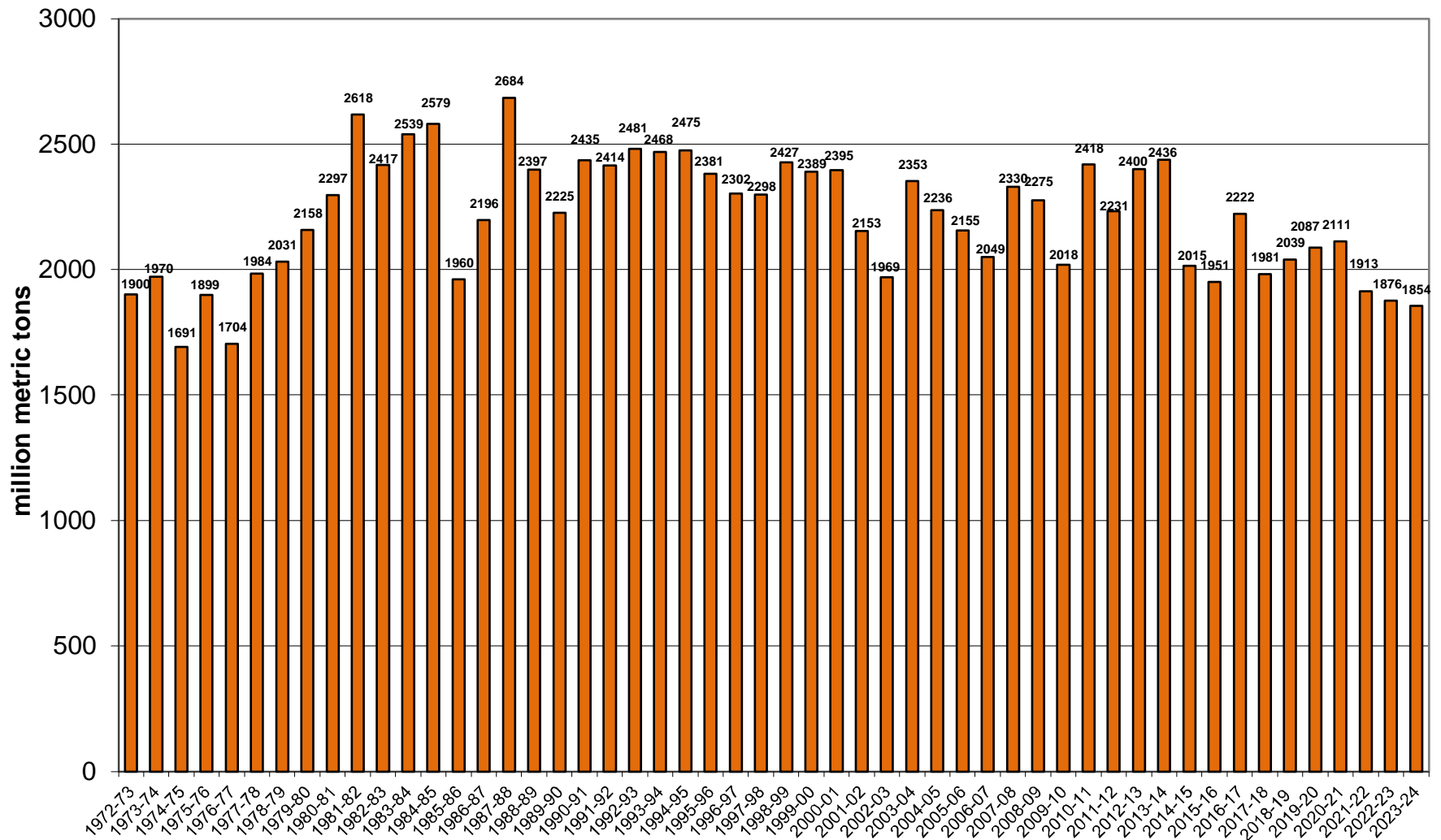
U.S. Wheat Carryout



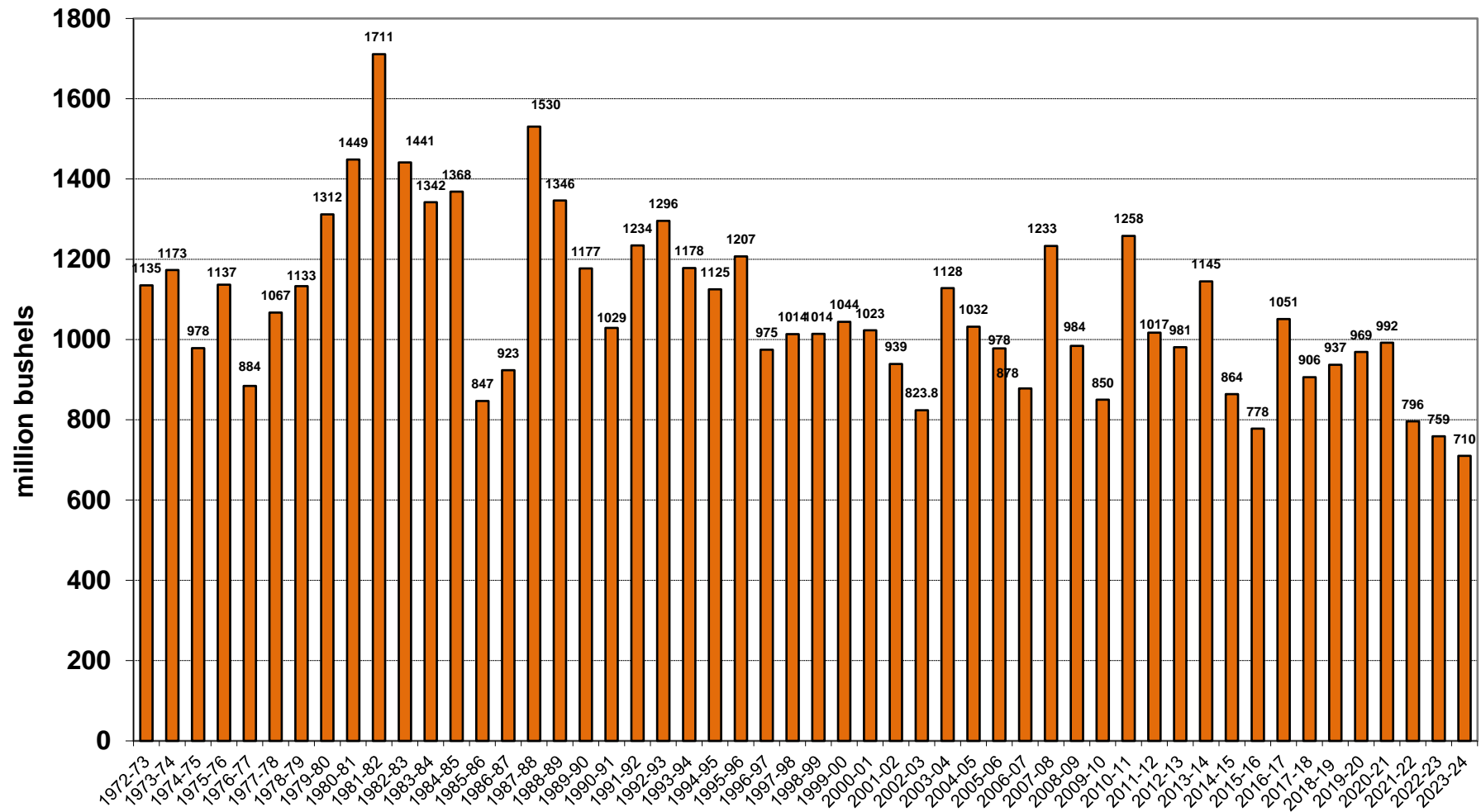
U.S. Wheat Production



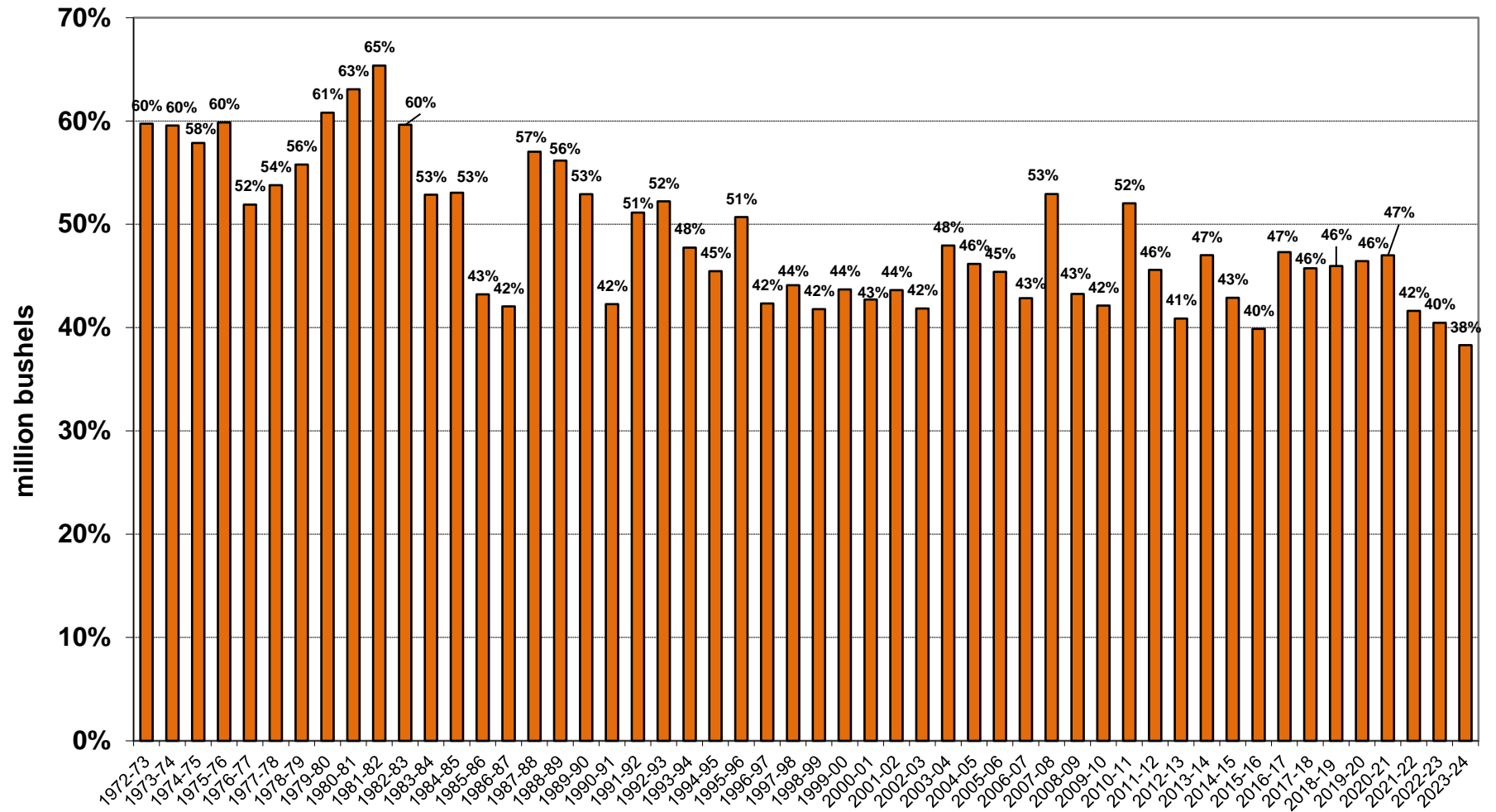
U.S. Wheat Usage



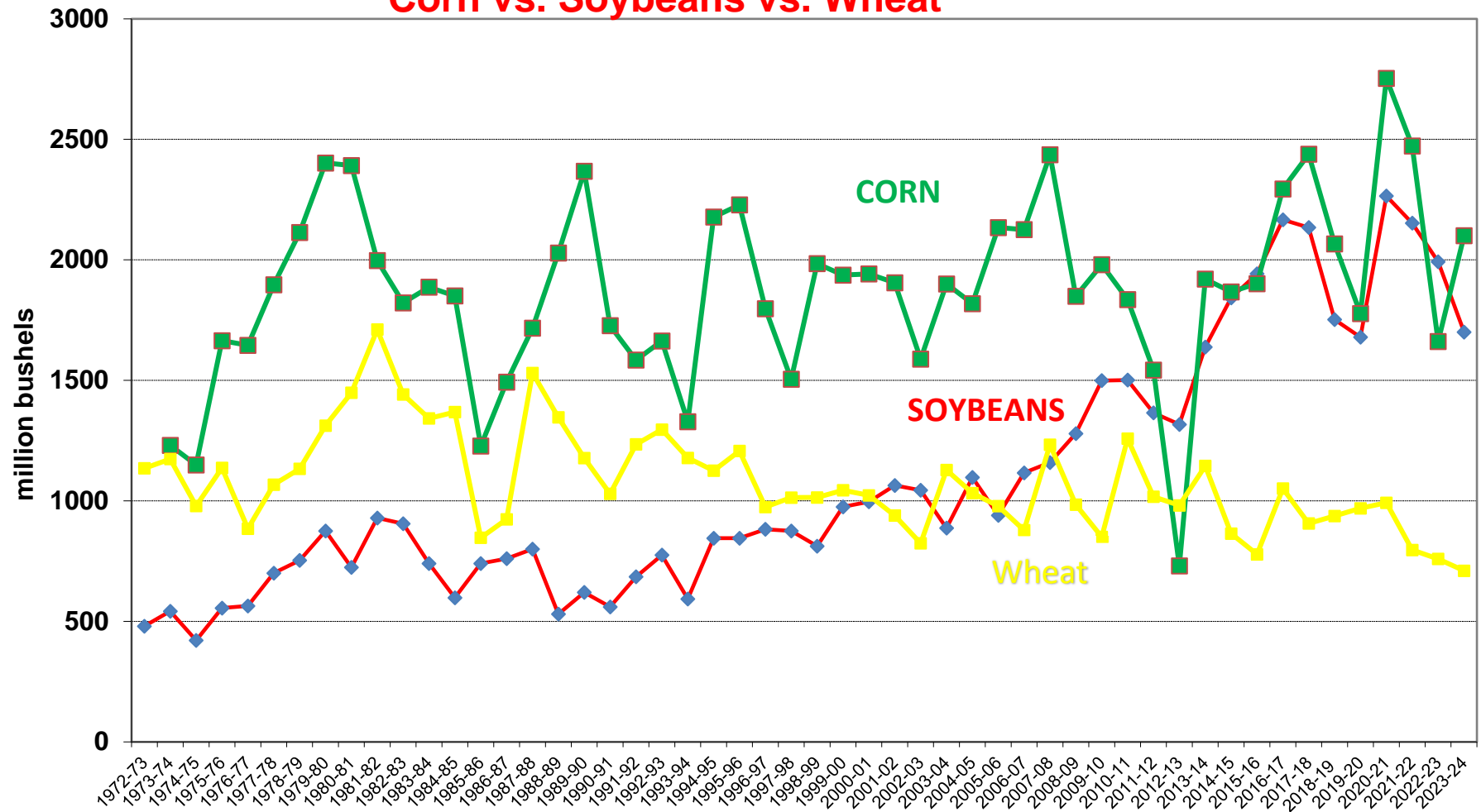
U.S. Wheat Exports



U.S. Wheat Usage Exports as a % of Use



U.S. Exports Corn vs. Soybeans vs. Wheat



World Corn + Wheat + Soybean Usage

